



Logistics put to test at time of crisis

Session 3: Mobilising European freight forwarders to take action to reduce emissions

FFF 2020
Freight Forwarders Forum
12/11/2020

European Commission
DG Mobility and Transport
Maritime Transport and Logistics

Transport sector severely impacted by the crisis



Passenger services almost halted



Freight suffered from lower demand



Major disruptions on road



Multimodal, rail freight, maritime relatively resilient

Starting Recovery – Commission Work Plan 2021

- Balancing long term objectives with immediate crisis management
- Repairing economic and social damage
- Kick starting recovery and protecting/creating jobs



Commission Work Programme

Sustainable and Smart

**The European
Green Deal**

von der Leyen Commission

#EUGreenDeal

**SHAPING
EUROPE'S
DIGITAL FUTURE**

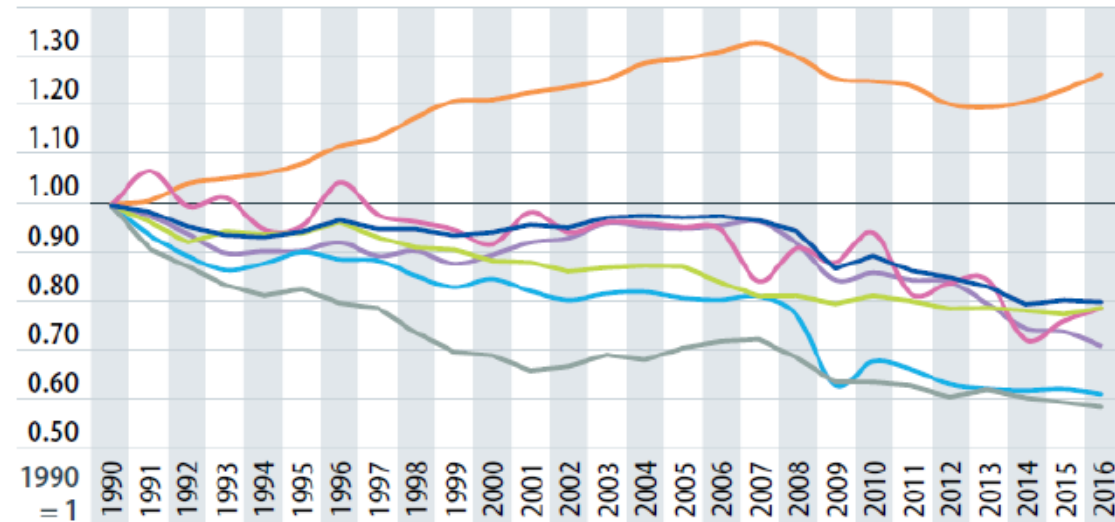
Global view - Emissions

Transport responsible for almost 25% of all EU CO₂ emissions.

Today's total CO₂ emissions from transport are higher than in 1990
Downward trend of 2007-2013 was broken in 2014 (due to the economic expansion).

For achieving climate-neutral economy by 2050, transport needs to reduce its emissions by 90%

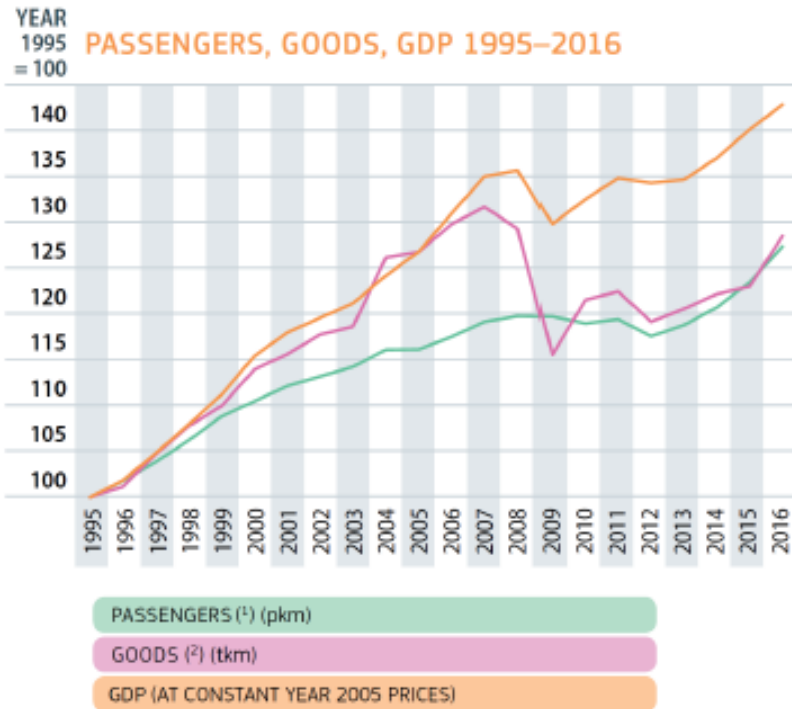
Energy Industries - Industry (***) - Transport (**) - Residential & Commercial - Agriculture, Forestry, Fisheries (****) - Other (*****) - Total



Notes: (*) Excluding LULUCF (Land Use, Land – Use Change and Forestry) emissions and international maritime, including international aviation and indirect CO₂.
(**) Excluding international maritime (international traffic departing from the EU), including international aviation.
(***) Emissions from Manufacturing and Construction, Industrial Processes and Product Use.
(****) Emissions from Fuel Combustion and other Emissions from Agriculture.
(*****) Emissions from Other (Not elsewhere specified), Fugitive Emissions from Fuels, Waste, Indirect CO₂ and Other.



Global view - Growth



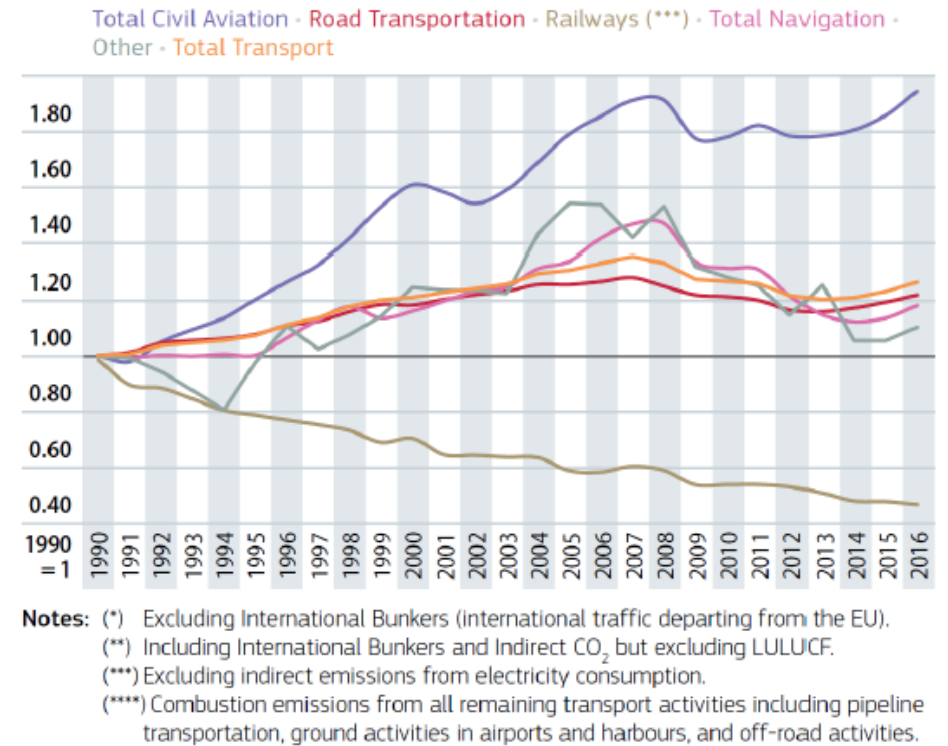
Notes: (1) Passenger cars, powered two-wheelers, buses & coaches, tram & metro, railways, intra-EU air, intra-EU sea.

(2) Road, rail, inland waterways, oil pipelines, intra-EU air, intra-EU sea.

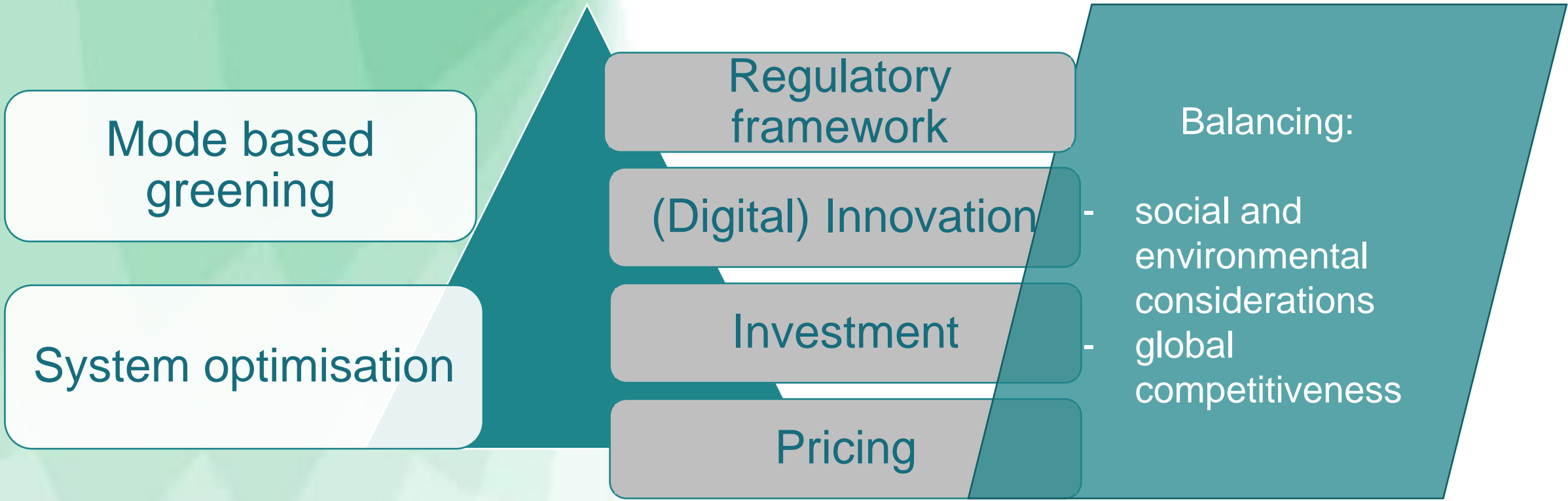
GDP: at constant year 2005 prices and exchange rates.

Total EU freight transport activities in 2015: 3516 billion tonne-kilometres, predicted to increase by 50% until 2050

Almost half carried out by road, followed by sea (31%), railway (12%), inland waterway (4%), oil pipeline (3%) and 0.1% by air.

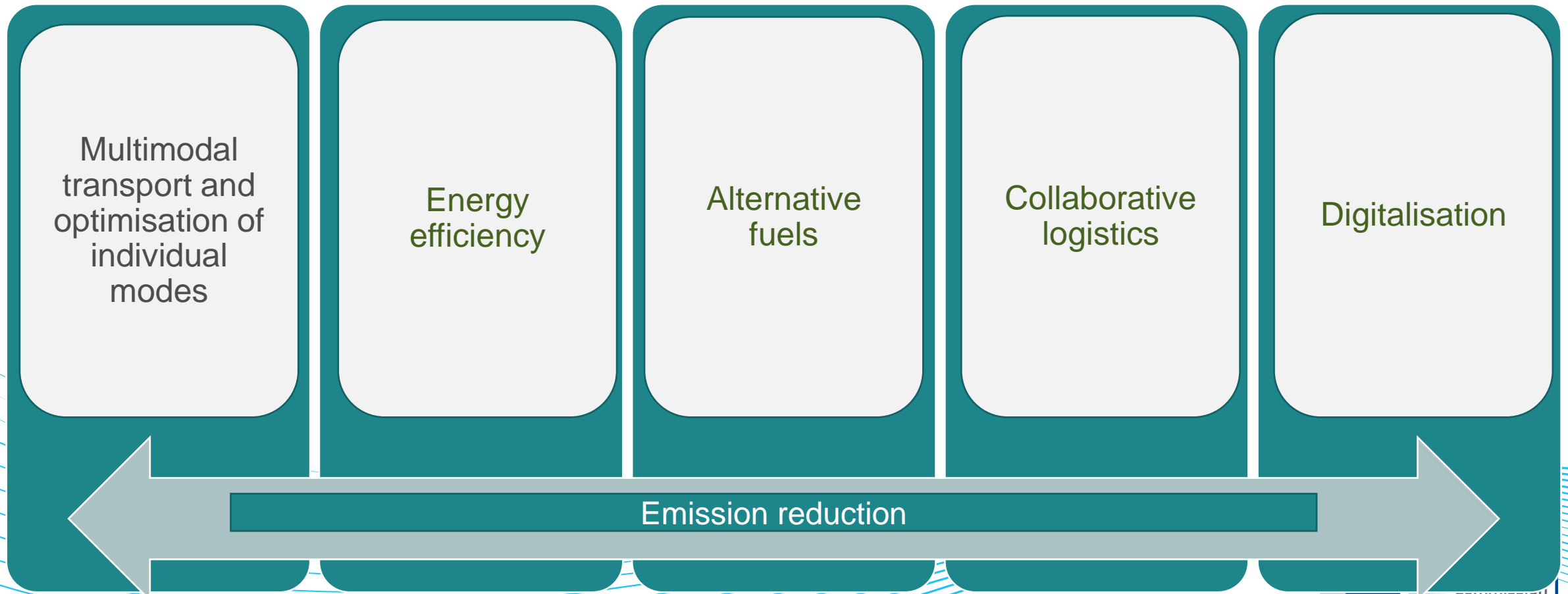


Global view – how we can get there?



A European Green Deal

Smart and sustainable transport and logistics - system optimisation



Why measuring?

Objective: Emission reduction

Benefits and opportunities

Competitive advantage and value proposition

Benchmarking and choice

Optimisation and innovation

Lower costs, higher efficiency

Comparability and quality

Certification and eco labelling

Carbon and GHG emissions measurement

Transport White Paper 2011

Initiative on establishing a harmonised methodology for carbon footprint measurement and certification

European Research Projects

Establishing the baseline for carbon footprint measurement – methodology and awareness

CEN Standard EN 16258

Methodology for freight and passenger services

EC Study 2014

Inventory and assessing possible options

Industrial Initiatives

Modal initiatives, GLEC

ISO/TC 207/SC 7 “Greenhouse gas management and related activities”

Global standardisation initiative

More....

Considering possible action at EU level

Thank you

astrid.schlewing@ec.europa.eu

Unit D1 Maritime Transport and Logistics

European Commission

Directorate General for Mobility and Transport



© European Union 2020

Unless otherwise noted the reuse of this presentation is authorised under the [CC BY 4.0](https://creativecommons.org/licenses/by/4.0/) license. For any use or reproduction of elements that are not owned by the EU, permission may need to be sought directly from the respective right holders.

Photos: <https://unsplash.com/photos/>

